

CONWAY VILLAGE FIRE DISTRICT
BOARD OF COMMISSIONERS' MEETING
Thursday, January 18, 2024, 5:00 P.M.
Admin. Building Meeting Room

The meeting was called to order at 5:05 P.M.

Commissioners present: Steve Bamsey and Mike Digregorio. Etienne Vallee is absent.
Staff present: Bookkeeper Amy Snow, Superintendent Vallieres, and Chief Remmington.
Andrew Smith was in attendance from the Town of Conway.

Administrative Business

Mr. Bamsey made the motion to ratify a., and b. Seconded by Mr. Digregorio.

- a. Ratify Weekly Payroll Manifest and sign checks for week ending 1/14/24.
- b. Ratify A/P Manifest dated 1/17/24 and sign checks dated 1/19/24.

Discussion:

Motion passed 2-0-0.

Mr. Bamsey made a motion to approve the minutes dated January 11, 2024, seconded by Mr. Digregorio. Mr. Bamsey amended the first paragraph under bookkeepers' business to read, \$94,458.00 instead of \$940,458.00. Motion passed as amended 2-0-0.

Mr. Digregorio made the motion to enter non-public under RSA 91-A:3 II (e). Seconded by Mr. Bamsey. Roll call vote. Mr. Digregorio – Yes, Mr. Bamsey – Yes. Entered non-public at 5:11 P.M.

The public session resumed at 5:58 p.m.

Superintendent's Business

Bruno presented the three bids that he received for the new heating system. (See attached.)
Discussion ensued.

Fire Chief's Business

The Chief stated that he has been working on staffing. He has had two offers accepted from Fire Fighter/EMT's. He does have applications for the Assistant Fire Chief position, he is working on setting up interviews for those.

Bookkeeper's Business

Any presented a sewer usage abatement request. **Mr. Bamsey made the motion to approve the sewer usage abatement in the amount of \$182.05 for 9 East Side Road. Seconded by Mr. Digregorio.**

Motion passed 2-0-0.

Amy then gave the Commissioners an update on the I/I project. The Request for Proposal (RFP) is advertised and on the 8th of February Underwood will be here for a pre-bid meeting. The bid opening is scheduled for the meeting of February 22nd. We're right on schedule.

The next meeting will be TBD 2024, at 5:00 P.M.

There being no further business to come before the Board, the meeting was adjourned without objection, at 6:30 P.M.

Respectfully submitted,
Lisa Chisholm
Office Assistant

Gaynor Heating and Cooling
1098 East Conway Rd
CENTER CONWAY, NH 03813 US
gaynorheatingandcooling@gmail.com



Estimate

ESTIMATE # 1574
DATE 12/29/2023
EXPIRATION DATE 01/29/2024

ADDRESS
Conway Village Fire District

Oil

PLEASE DETACH TOP PORTION AND RETURN WITH YOUR PAYMENT.

DATE	ACTIVITY	DESCRIPTION	QTY	RATE	AMOUNT
	Sales	Removal of existing oil boiler. Installation of Buderus G315 boiler with reילו oil burner. Installation includes all new near piping, hydronic components, controls, pumps, venting. All parts, labor and equipment included.	1	32,450.00	32,450.00
TOTAL					\$32,450.00

Accepted By

Accepted Date

Gaynor Heating and Cooling
1098 East Conway Rd
CENTER CONWAY, NH 03813 US
gaynorheatingandcooling@gmail.com



Estimate

ESTIMATE # 1571
DATE 11/13/2023
EXPIRATION DATE 12/13/2023

ADDRESS
Conway Village Fire District

PLEASE DETACH TOP PORTION AND RETURN WITH YOUR PAYMENT.

DATE	ACTIVITY	DESCRIPTION	QTY	RATE	AMOUNT
	Sales	Gas option Removal of existing oil boiler. Installation of 2 new Viessmann 100w 199kbtu 95%efficient propane boilers to be controlled in tandem with redundancy. Installation includes all new near piping, hydronic components, controls, pumps, venting, and gas piping. All parts, labor and equipment included.	1	27,920.00	27,920.00
TOTAL					\$27,920.00

Accepted By

Accepted Date

Gas

Proposal



**WHITE MOUNTAIN
OIL & PROPANE**
Always there for you...

New
REVISED

**PO Box 690
North Conway, NH 03860
(800)600-4728 – FAX: (603)356-7181 – Email: sales@whitemountainoil.com
www.whitemountainoil.com**

PROPOSAL SUBMITTED TO: Conway Village Fire District	PHONE: 603.447.5470	DATE: 10/18/2023
MAILING ADDRESS: 128 West Main St.	JOB LOCATION: Same	
CITY, STATE AND ZIP CODE: Conway, NH 03818	CITY, STATE AND ZIP CODE:	
ACCOUNT NUMBER: 34334-01	CUSTOMER'S EMAIL ADDRESS: asnow@cvillagefd.com	

An installation of a new Viessmann LP CU3A Boiler to replace Oil Heating System. Proposal includes installing all new piping and radiant mixing valves in Boiler Room, an Indirect 40-Gallon Hot Water System, all gas work, also includes a Rinnai EX - 11 for the Front Office.

VISSMANN CU3A PROPANE BOILER (199,000 BTU):	\$ 9,095.00
VISSMANN 40-GALLON INDIRECT HOT WATER SYSTEM:	\$ 2,950.00
MATERIALS AND VENTING:	\$ 8,100.00
RINNAI EX - 11 FOR FRONT OFFICE: - NO NEED	\$ 1,510.00
LABOR:	\$ 7,500.00

Permit Filing Fee (if applicable): \$ 0.00

Total: \$ 29,155.00

Due to circumstances out of our control, some items are taking longer than usual to receive and delivery dates may be unpredictable, resulting in a delay of the installation date

Once signed Proposal and deposit are received, the parts will be ordered and an install date will be scheduled.

This Proposal does not include Maine State Tax (if applicable)

TOTAL PROPOSAL: \$ 29,155.00

IF YOU ACCEPT THIS PROPOSAL, DO YOU WANT YOUR DEPOSIT PAID BY YOUR CREDIT CARD ON FILE?

REQUIRED DEPOSIT: \$ 14,577.50

CIRCLE: YES or NO

BALANCE DUE WITHIN 30 DAYS OF JOB COMPLETION

Authorized Signature:

Shane McKinney

Salesman

This Proposal is Valid for 30 Days

If you have questions on this Proposal, please call Ellen Belcastro at 603.356.6386 ext. 116

Acceptance of Proposal- The above prices, specifications and conditions are satisfactory and are hereby accepted. You are authorized to do the work specified. Payment will be made as outlined above.

Date of acceptance: _____

Signature: _____

Proposal



REVISED

nmw

PO Box 690
North Conway, NH 03860
(800)600-4728 – FAX: (603)356-7181 – Email: sales@whitemountainoil.com
www.whitemountainoil.com

PROPOSAL SUBMITTED TO: Conway Village Fire District	PHONE: 603.447.5470	DATE: 10/18/2023
MAILING ADDRESS: 128 West Main St.	JOB LOCATION: Same	
CITY, STATE AND ZIP CODE: Conway, NH 03818	CITY, STATE AND ZIP CODE:	
ACCOUNT NUMBER: 34334-00	CUSTOMER'S EMAIL ADDRESS: asnow@cvillagefd.com	

Pump off and removal of (2) 275-gallon Oil Tanks as required by DES of NH:

PUMP OFF AND REMOVAL OF (2) 275-GALLON OIL TANKS:	\$ 975.00
LABOR:	\$ 453.00

Permit Filing Fee (if applicable): \$ 0.00
Total: \$ 1,428.00

Once signed Proposal and deposit are received, the parts will be ordered and an install date will be scheduled.

This Proposal does not include Maine State Tax (if applicable)

TOTAL PROPOSAL: \$ 1,428.00

IF YOU ACCEPT THIS PROPOSAL, DO YOU WANT YOUR DEPOSIT PAID BY YOUR CREDIT CARD ON FILE?

CIRCLE: YES or NO

REQUIRED DEPOSIT: \$ 714.00

BALANCE DUE WITHIN 30 DAYS OF JOB COMPLETION

Authorized Signature: Shane McKinney
Salesman

This Proposal is Valid for 30 Days

If you have questions on this Proposal, please call Ellen Belcastro at 603.356.6386 ext. 116

Acceptance of Proposal- The above prices, specifications and conditions are satisfactory and are hereby accepted. You are authorized to do the work specified. Payment will be made as outlined above.

Date of acceptance: _____ Signature: _____

JON HURTEAU HEATING SERVICES

PO BOX 585
 CONWAY NH 03818

Estimate

Date	Estimate #
2/17/2023	267

Name / Address
CONWAY VILLAGE FIRE DISTRICT 128 WEST MAIN STREET CONWAY NH 03818

Project
CONWAY VILLAG...

Description	Qty	Cost	Total
<p>THIS IS ONLY AN ESTIMATE FOR THE FOLLOWING WORK AS REQUESTED FOR A BUDGET:</p> <ul style="list-style-type: none"> - REMOVE OLD OIL BOILER AND ALL ITS NEAR BOILER PIPE WORK - INSTALL A TRIPLE PASS OIL BOILER (406K BTU'S) - RIELLO F15 OIL BURNER - NEW SMOKE PIPE TO CHIMNEY - CONNECT TO YOUR EXCITING OIL LINES - ALL NEW NEAR BOILER PIPE WORK IN COPPER PIPE WORK - NEW CIRC PUMPS AND ISON FLANGES - MIX VALS FOR ALL RADIANT HEAT LOOPS - EXP TANK AND FEEDER FOR HEAT SYSTEM - LOW WATER CUT OFF AND 2ND HIGH LIMITS AS REQUIRED FOR STATE - NEW NEAR BOILER WIRING AND CONTROLS - FRESH AIR FROM OUTSIDE TO BURNER - EXTRA ZONE FOR FUTURE HEAT ZONE (ENTRY TO BUILDING) <p>THIS ESTIMATE RANGE IS ONLY GOOD FOR 15 DAYS</p> <p>\$ 47,000.00 - \$ 49,000.00 OIL BOILER \$ 53,000.00 - \$ 55,000.00 GAS BOILER (SAME BOILER JUST DIFFERENT BURNER BUT THIS DOESN'T INCLUDE GAS LINE WORK TO BOILER) \$ 54,000.00 - \$ 56,000.00 WALL HUNG GAS BOILER (NO GAS LINE WORK TO BOILER)</p>			
		Total	

Customer Signature

Ratings

Boiler / Jacket / Trim / Package #	Firing Rate (#2 Fuel)	Oil Input BTU/hr	Oil Output BTU/hr	Net Output (BTU/hr)	Oil Combustion Efficiency	Gas Input BTU/hr	Gas Output BTU/hr	Gas Combustion Efficiency	Net Output (Btu. ft.)	Water Capacity (gal.)	Shipping Weight
PC8230 (Assembled Block)	2.30	322,000	276,000	240,000	85.7	322,000	268,000	83.2	1600	17	1170
PC7290 (Assembled Block)	2.90	406,000	352,000	306,000	86.7	406,000	342,000	84.2	2040	20	1300
PC8350 (Assembled Block)	3.50	490,000	426,000	370,000	86.9	490,000	413,500	84.4	2485	23	1435
PC9410 (Assembled Block)	4.10	574,000	501,000	436,000	87.3	574,000	487,900	85	2910	26	1540
PC10470KD (Unassembled Block)	4.70	658,000	575,000	500,000	87.3	658,000	559,300	85	3335	28	1660
PC11530KD (Unassembled Block)	5.30	742,000	649,000	564,000	87.4	742,000	631,400	85.1	3760	32	1765
PC12590KD (Unassembled Block)	5.90	826,000	723,000	629,000	87.5	826,000	703,700	85.2	4195	35	1900

Burners

Boiler Model #	Oil Burner Model	Oil Burner Part #	Gas Burner Model	Gas Burner Part #
PC8230	Riello F10	706016	Beckett CG10 Carlin 301 Riello 400	706026 706058 706066
PC7290	Riello F15	706017	Beckett CG10 Carlin 301 Riello 900	706027 706057 706067
PC8350	Riello F15	706017	Beckett CG10 Carlin 301 Riello 900	706028 706058 706068
PC9410	Riello F15	706017	Beckett CG10 Carlin 301 Riello 900	706029 706059 706069
PC10470	Riello F15	706017	Beckett CG10B Carlin 301 Riello 900	706030 706060 706070
PC11530	Riello F20	706021	Beckett CG10B Carlin 301 Riello 900	706031 706061 706071
PC12590	Riello F20	706021	Beckett CG10B Carlin 301 Riello 900	706032 706062 706072

Dimensions (all models)

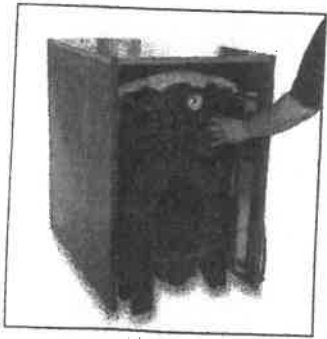
Cabinet Height	41-1/8"
Cabinet Width	25-3/8"
Bare Boiler Block Width	19"
Supply Outlet Size NPT	2-1/2"
Supply Outlet Height C.L.	34-1/8"
Return Size NPT	2-1/2"
Return Outlet Height C.L.	3-7/8"
Flue Outlet Diameter	8"
Flue Outlet Height C.L.	34-1/4"

Dimensions

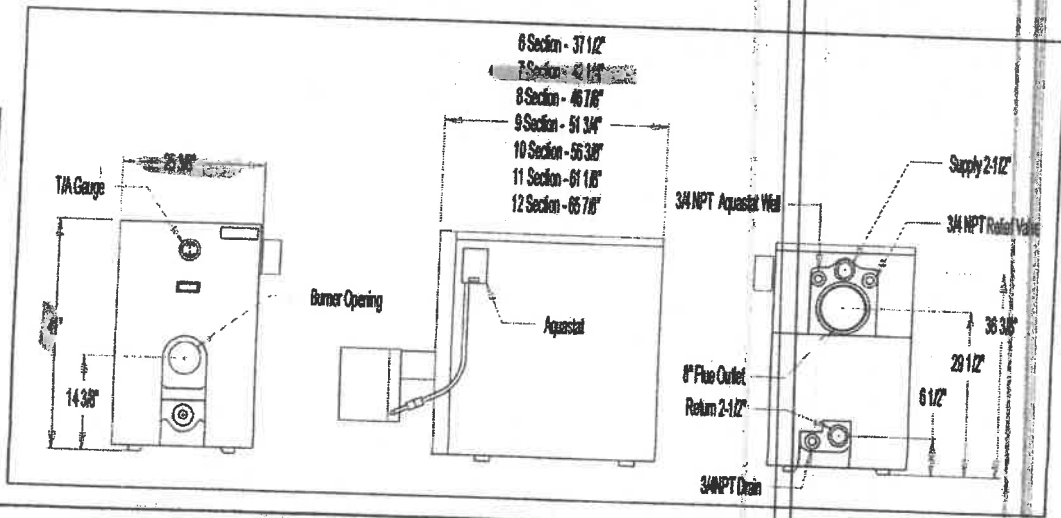
Boiler Model #	Cabinet Length	Bare Boiler Block Length
PC8230	37-1/2"	34-3/8"
PC7290	42-1/4"	39-1/8"
PC8350	46-7/8"	43-3/4"
PC9410	51-3/4"	48-1/2"
PC10470	56-3/8"	53-3/8"
PC11530	61-1/8"	58"
PC12590	66-7/8"	62-3/4"

Commercial Parts Kit (Standard w/all boilers)

- 1/2" x 1/4" Bushing
- 3/4" Street Elbow
- 30 PSI Relief Valve
- 3/4" x 6" Nipple
- 3/4" x 5" Nipple
- 3/4" Elbow
- 2 1/2" x 2 1/2" x 3/4" Tee (1)
- 2 1/2" Elbow
- 2 1/2" x 8" Nipple
- 2 1/2" x 4" Nipple
- 3/4" Drain Valve
- HydroStat 3250
- Aquastat
- Immersion Well
- 10' Temperature Probe
- L4006E1109 B 130 to 240°F
- T & A Gauge
- 3/4" Standard Well
- Ground Wire
- Stainless Floor Blanket



Superior serviceability.
Complete access to all three passes.



NEW

BEST WARRANTY AVAILABLE
10
YEARS
PARTS & LABOR

AFUE
96
AFUE

SL[™]
SERIES
GB



HEAT

**HIGH EFFICIENCY
CONDENSING BOILERS**

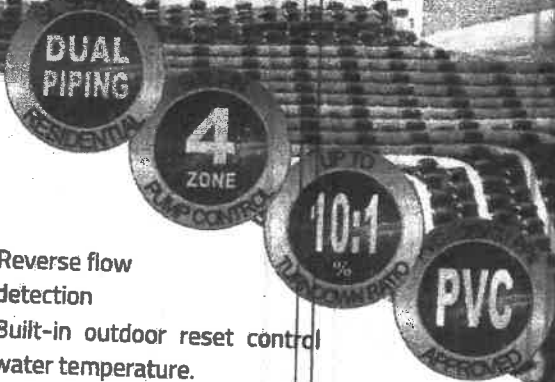
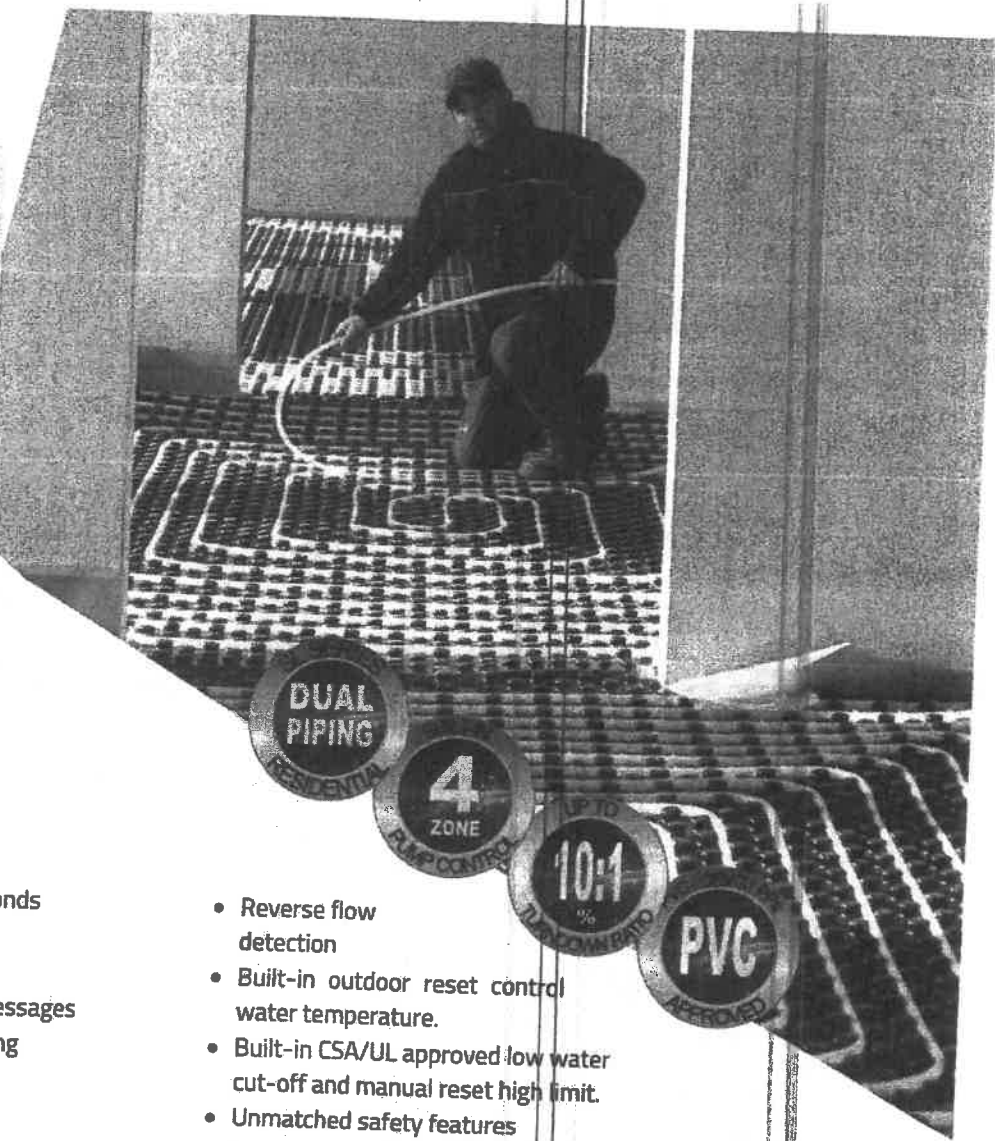
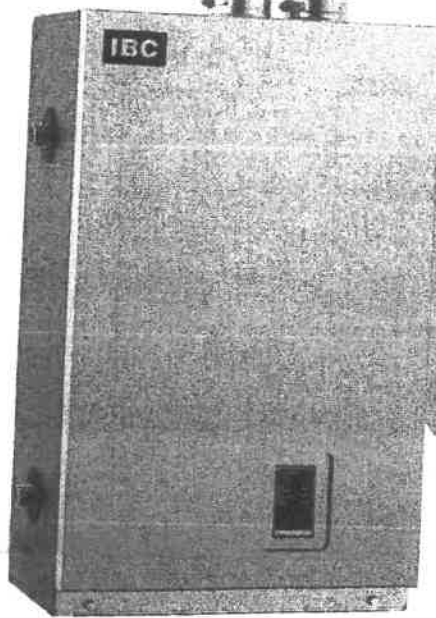
**LIMITED
LIFETIME**
RESIDENTIAL
PARTS & LABOR
WARRANTY

**5
YEAR**
PARTS
WARRANTY

**MADE IN
CANADA**

**With registration. See website for details - GSA Only*

IBC



TOUCH CONTROL

- Express setup - program your boiler in seconds
- Remote monitoring & diagnostics
- Easy USB programmability
- Intuitive alert system with detailed error messages
- Visible flame current data for troubleshooting
- Simplified load pairing
- Optional true native BACnet

EASY TO INSTALL & SERVICE

- With supply and return connection on both sides of 4 models, your boiler installation can't get any easier
- PVC/CPVC/PPs approved
- Longest combined vent lengths - Up to 200 ft in 2" and 480 ft in 3"
- More common parts. With only 2 fans and a universal controller servicing all models just got a lot easier
- Fuel conversion kits included in residential models
- Easy to inspect Heat exchanger featuring a condensate draining system that cleans as it heats

MORE BUILT-IN FEATURES

- Built-in zone pump control - up to 4 zones. Replacing the need for external pump controls
- MFZ Technology: Patented moisture management system. Protects and ensures long life for all components in the boiler
- Turndown ratio of up to 10:1 means you have the power to heat your home in the coldest weather, yet reduce short cycling when the weather is mild

- Reverse flow detection
- Built-in outdoor reset control water temperature.
- Built-in CSA/UL approved low water cut-off and manual reset high limit.
- Unmatched safety features
- Connect your IBC Indirect Water Tank directly to the boiler without a primary loop

SUPERIOR HIGH EFFICIENCY HEAT EXCHANGER

- Efficiency up to 96% A.F.U.E. (SL 399G3 TE/CE 96%)
- One of the most advanced stainless steel fire tube boiler on the market today
- Increased efficiency: Custom baffling to ensure even heat transfer and long life



COMMERCIAL FEATURES

- Multi-boiler communication. Easy boiler network setup. Up to 9.5 million Btu/h (24 boilers) without additional controls
- With 24 boilers turndown ratio is 240:1 = min. firing rate range is 40,000 Btu/h all the way up to 9.5 million Btu/h in 1000 Btu/h increments
- Ti option available on SL 40-399G3
- DDC Control 0-10 VDC or 4-20 mA without additional controls

TRIO Commercial Cast Iron Boiler



CAST IRON BOILERS

Features

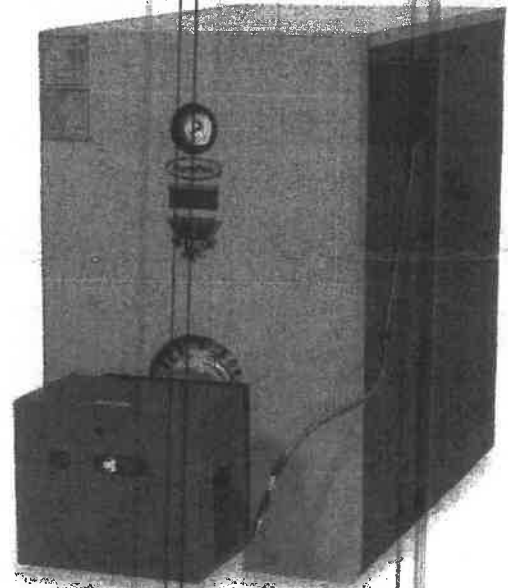
- 3-Pass wet-base Euro design
- Manufactured with corrosion and thermal shock resistant GG20 cast-iron
- 58 PSI cast-iron construction
- Easy-access full open reversible swing-out door for easy access to combustion area
- Super-efficient, 3-Pass flue/heat exchanger, does not require refractory material in chamber area
- Low mass and low water volume
- Multi-Fuel capability; Oil, Natural Gas & Propane
- Extra heavy 3" insulation for low jacket & standby losses
- 19½" wide block allows for easy access through standard size doorways
- ASME listed
- Fuel Smart HydroStat® 3250 control
 - Temperature Limit Control: Designed for cold start boilers
 - Low Water Cut-Off: Provides protection against potentially dangerous low water conditions
 - Boiler Reset Control: Utilizes Thermal Targeting™ technology to conserve fuel by monitoring heating demand and establishing target boiler temperatures below the high limit setting

The TRIO® Commercial boiler by PurePro® with its highly efficient, 3-Pass design offers Multi-Fuel flexibility by using either oil or gas burners. Our GG20 cast-iron block, with its 58 PSI rating and easy access swing door, is unsurpassed in durability and efficiency, providing years of trouble-free operation.

There are 7 models ranging from 240 to 629 MBH, which are suitable for commercial or multi-unit buildings. We have tested our systems extensively and are ASME certified.

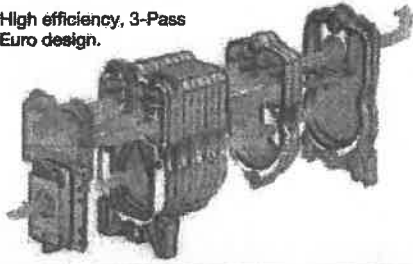
The TRIO Commercial heat exchanger path is up to 15 feet in length, and the 3-Pass design heats more surface area per gallon burned, with 25% less heat lost than pin-type boilers.

Industry leading 20 year Limited Warranty



Shown with Riello Oil Burner

High efficiency, 3-Pass Euro design.



Optional Burners:



Beckett CG Gas Burner



Carlin 301 Gas Burner

PurePro Energy Manager Plus II

The optional PurePro Energy Manager Plus II integrates a five-zone relay board, boiler aquastat, low water cutoff, and boiler reset. This simple-to-use control comes completely pre-wired.

The PurePro Energy Manager Plus II features the Honeywell AQ25042B multiple zone control and the Hydrolevel 3250 HydroStat. The HydroStat 3250 uses Thermal Targeting to match the heat load and boiler water temperature.


To further enhance fuel efficiency, the fuel smart HydroStat is also equipped with a thermal pre-purge feature. When activated, the control will purge standing heat in the boiler at the start of any thermostat call, supplying the free latent energy to the heating zone that is calling.

FuelSmart HydroStat 3250



Boiler Mount

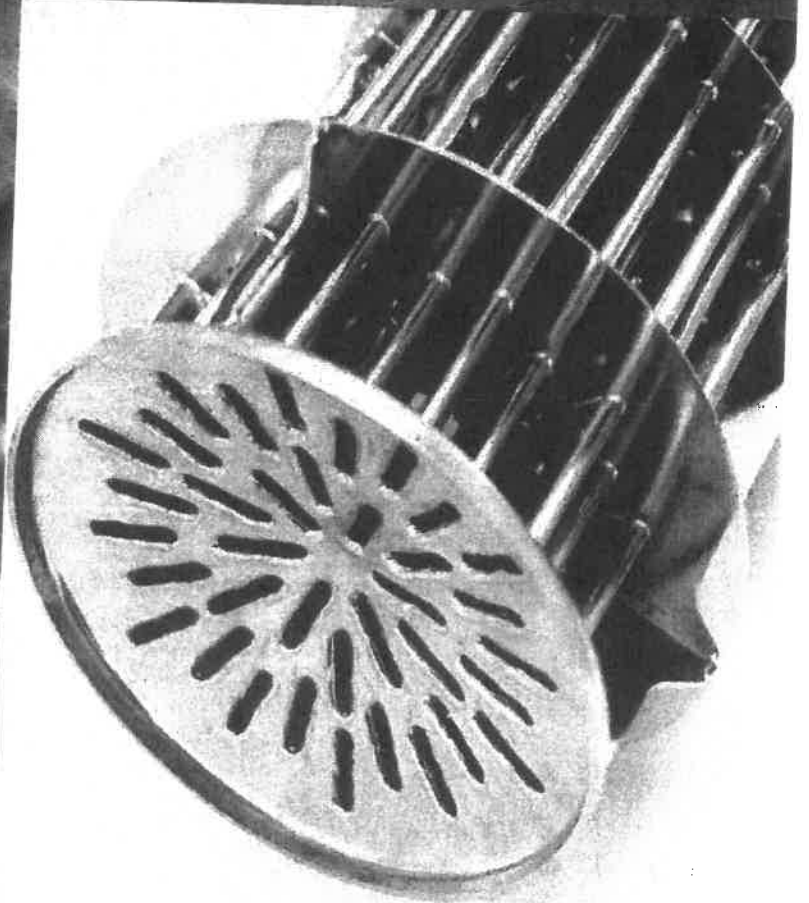
5 year Warranty



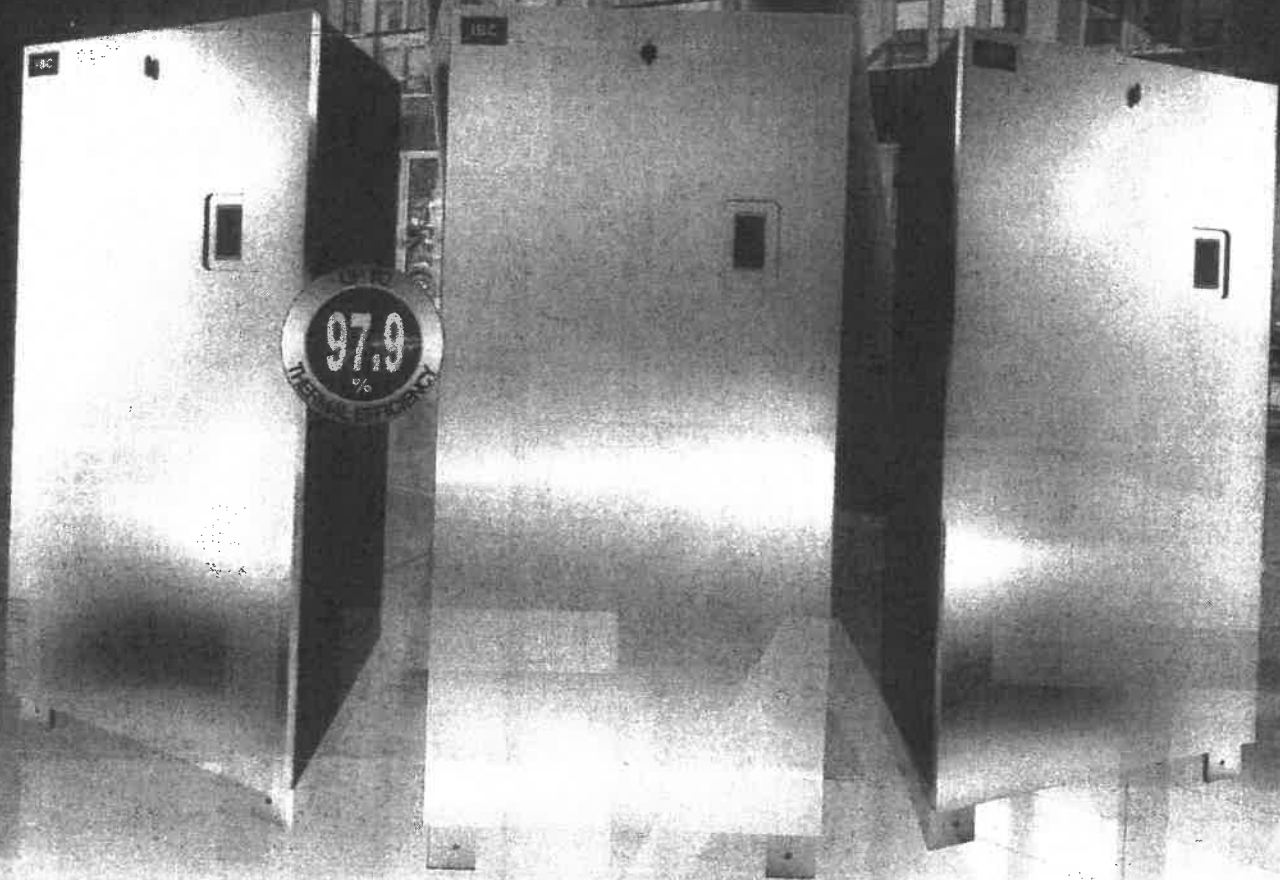
MULTIPLEX
RACKING



FREE REMOTE
ACCESS



EX SERIES



**HIGH EFFICIENCY CONDENSING BOILERS
COMMERCIAL**

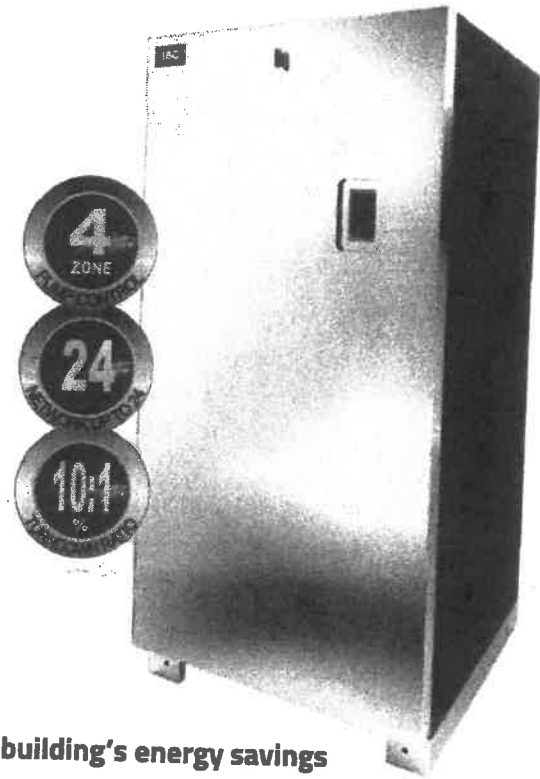


IBC

EX SERIES

Suitable for the following projects

- SCHOOLS
- HEALTHCARE FACILITIES
- BARN/FARM BUILDINGS
- SNOW MELT
- RECREATIONAL FACILITIES
- COMMERCIAL GARAGES
- OFFICE BUILDINGS
- FACTORIES / WAREHOUSING
- LARGE RESIDENCES / MULTI-FAMILY HOUSING
- APARTMENT BUILDINGS
- HOTELS



Choosing the right heating system is crucial to maximizing a building's energy savings and environmental impact. The EX Series of commercial high efficiency condensing boilers can help you do just that. 4 Models available: EX 400, EX 500, EX 700, EX 850

Features

Touchscreen Control

- Express setup - program your boiler in seconds with remote monitoring & diagnostics
- Precise burner modulation control
- Easy USB programmability
- Intuitive alert system with detailed error message
- Vast array of performance data for troubleshooting
- Load combining and zoning
- Multi-boiler communication for network applications up to 24 boilers without additional controls
- With 24 networked boilers turndown ratio is 240:1
- End switch, 0-10 VCD or 4-20mA control compatible
- Full BACnet capability included
- Primary pump and zone pump controller - up to 4 zones

Built-in Features

- Unparalleled build quality
- Turndown ratio of 10:1 means you have the power to heat the building in the coldest weather, yet reduce short cycling when the weather is mild
- MFZ Moisture management protocol
- Reverse flow detection
- Outdoor reset control of water temperature

- CSA/UL approved low water cut-off and manual reset high limit
- CSD-1 Compliant
- Unmatched safety features

Superior Heat Exchanger

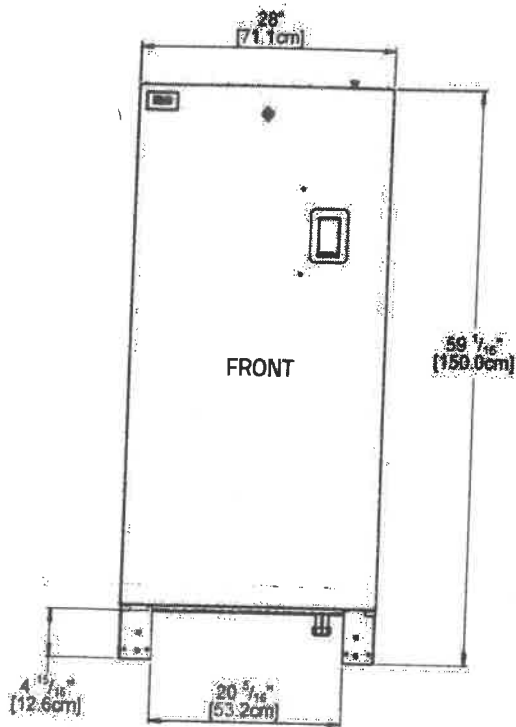
- The most advanced stainless steel fire tube boiler on the market today
- High grade 439 stainless steel construction
- Innovative saddle-bolt lit hardware
- Better thermal efficiency - up to 97%
- Condensed flue gasses clean vertical flue tubes while draining
- Custom water flow baffling to ensure even heat transfer and long life

Easy to Install & Service

- PVC/CPVC/PP/SS venting materials approved
- Direct vent lengths - up to 170' each side
- Available in either NG or LP factory set or field convertible
- Open access to heat exchanger and all internal components

EX SERIES

Dimensions

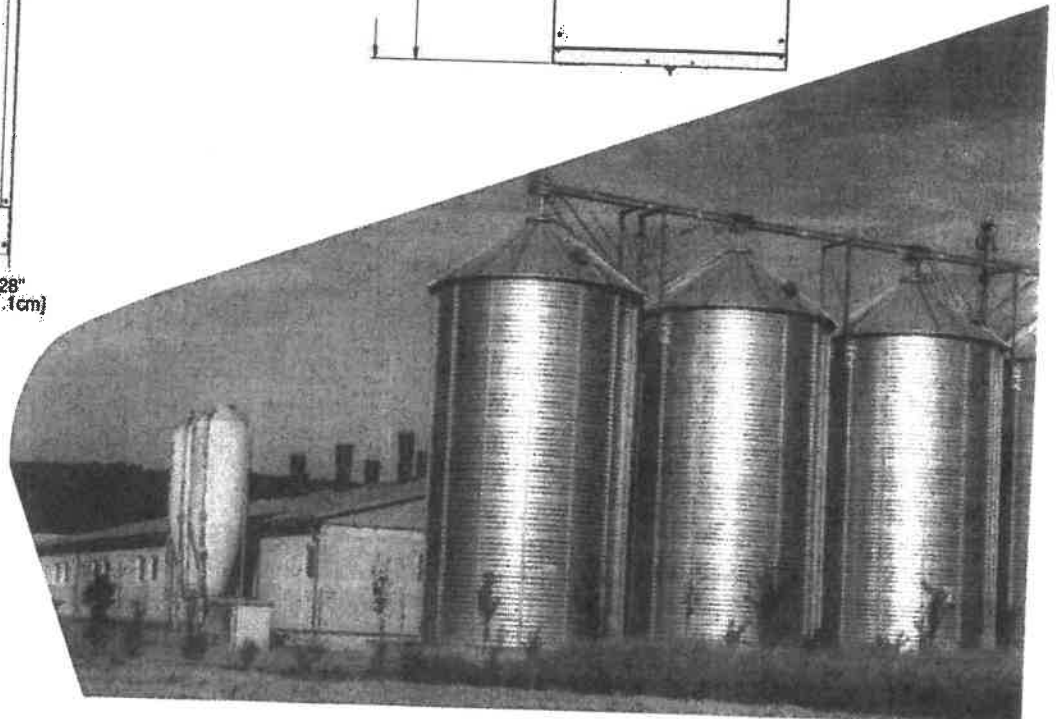
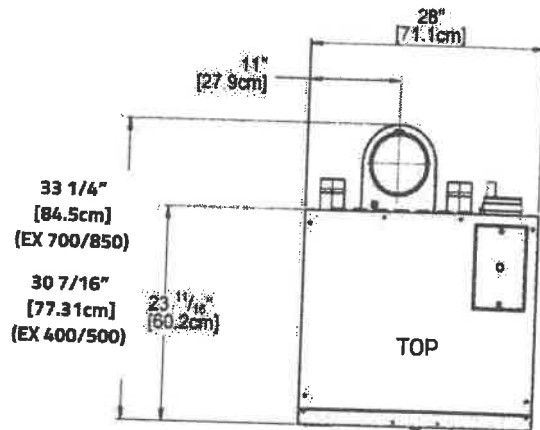
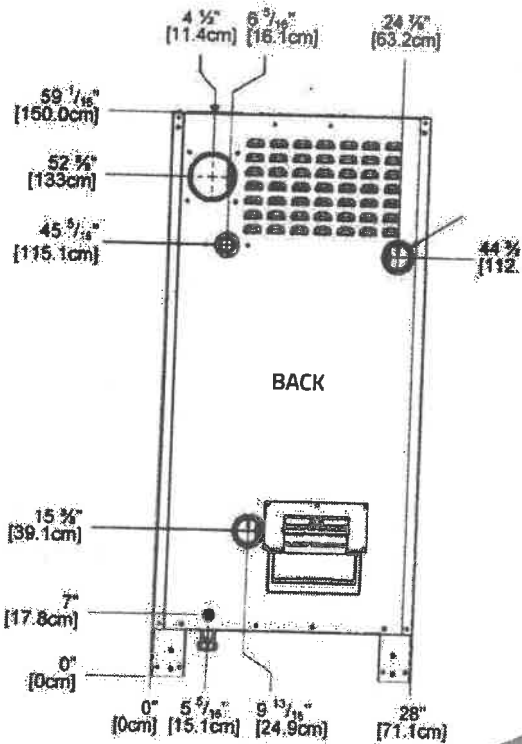


CONNECTIONS

Connection	EX 400 / EX 500	EX 700 / EX 850
Flue Outlet	4" Schedule 40	6" Schedule 40
Combustion Air Inlet	4" Schedule 40	4" Schedule 40
Water Outlet	2" NPT-M	2 1/2" NPT-M
Water Inlet	2" NPT-M	2 1/2" NPT-M
Knock-outs (8)	1/2"	1/2"
Gas Inlet	1" NPT-F	1" NPT-F
Condensate Outlet	3/4" Hose	3/4" Hose

CLEARANCE FROM BOILER CABINET

Surface	Distance from combustible surfaces	Recommended distance for installation and service
Front	2"	30"
Rear flue connection	2"	24"
Left side	1"	2"
Right side	1"	4"
Top	6"	12" (required for filter replacement)
Bottom	0"	0



EX SERIES

Technical Information



VENTING	MAXIMUM EQUIVALENT LENGTH	
Sched. 40; Rigid PPs	EX 400 / EX 500	EX 700 / EX 850
4"	170' (each side)	N/A
6"	N/A	120' (each side)
90° Vent Elbow	allow 5' equivalent	allow 5' equivalent
45° Elbow	allow 3' equivalent	allow 3' equivalent
PPs 87-90° Elbows	use 5' equivalent	use 5' equivalent

SPECIFICATIONS	* EX 400	* EX 500	EX 700	EX 850
CSA Input (Natural Gas or Propane) - MBH	40 - 399	50 - 500	70 - 700	85 - 850
CSA Input (Natural Gas or Propane) - kW	11.7 - 117	14.6 - 146.5	20.5 - 205	24.9 - 249
CSA Output (Natural Gas or Propane) - MBH	388	485	679	824.50
CSA Output (Natural Gas or Propane) - kW	114	142	199	241.60
Thermal Efficiency	97.9%	97.5%	97.0%	97.0%
Min Gas Supply Pressure (Nat. Gas or Propane) - inch w.c.	4	4	4	4
Max Gas Supply Pressure (Nat. Gas or Propane) - inch w.c.	14	14	14	14
Ambient Temperature - Low (F/C)	32° / 0°	32° / 0°	32° / 0°	32° / 0°
Ambient Temperature - High (F/C)	122° / 50°	122° / 50°	122° / 50°	122° / 50°
Max relative humidity (non-condensing)	90%	90%	90%	90%
Min water Temperature (F/C)	34° / 1°	34° / 1°	34° / 1°	34° / 1°
Max water Temperature - (electronic high limit) (F/C)	190° / 88°	190° / 88°	190° / 88°	190° / 88°
Max. ΔT - supply/return (electronic fence) (F/C)	80° / 44°	80° / 44°	80° / 44°	80° / 44°
Max. Water Temperature Lockout Limit (F/C)	201° / 94°	201° / 94°	201° / 94°	201° / 94°
Power (120Vac/60Hz) @ full fire - watts (without pumps)	150	210	195	228
Weight (empty) - lbs/Kg	414 / 188	441 / 200	486 / 202	510 / 231
Heating Surface Area ft² / m²	55.3 / 5.14	72.9 / 6.77	84.6 / 7.86	99.88 / 9.28
Pressure Vessel water content - USG/Liters	13.5 / 51	12.3 / 46.7	17.5 / 66.3	16.5 / 62.3
Max boiler flow rate - USgpm	100	100	100	100
Min boiler flow rate - USgpm	10	15	18	21
Max Operating Water Pressure - psig *	160	160	160	160
Min Operating Water Pressure - psig	8	8	8	8
Relief valve pressure - psig	50	50	50	50
Approved installation altitude (Ft)	12,000	12,000	12,000	12,000
Max equivalent vent length (each side)	170'	170'	120'	120'

Available in either NG or LP factory set or field convertible



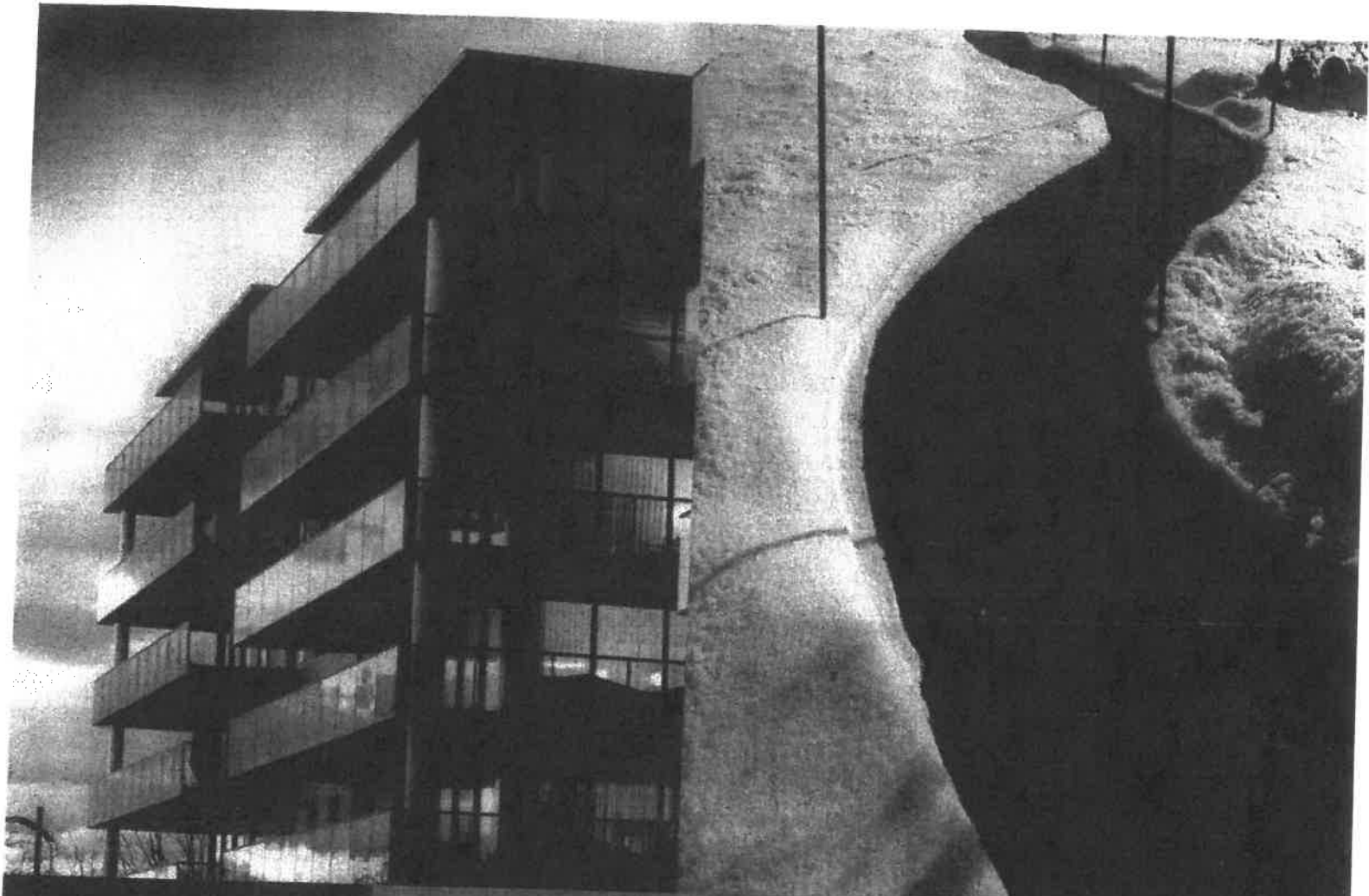
IBC

sales@ibcboiler.com • www.ibcboiler.com

Toll Free: 1-844-HEAT IBC / 1-844-432-8422

All information contained in this brochure is subject to change without notice. Due to clerical error, regulation change or product development please confirm all information with IBC.

900-322(R13)



**FREE REMOTE
ACCESS**



IBC Control at your fingertips

All EX Boilers use our V-10 Touch Screen boiler control which features the latest in advance control technology and software.

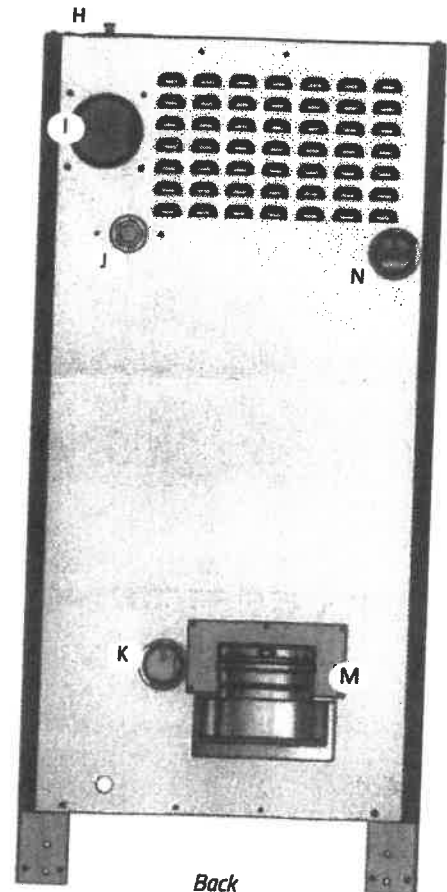
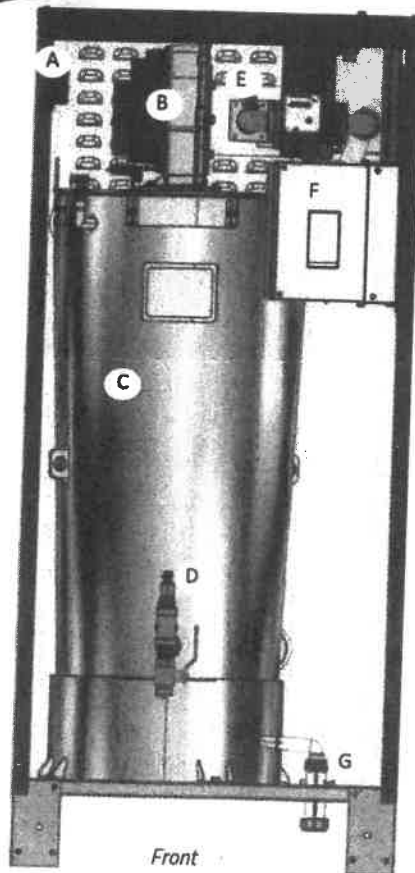
Easy to setup and monitor with features like Express Setup, easier Diagnostics & Intuitive Alert System with plain English Warnings & Error Messages, no boiler has ever been easier to use.

Login to the V-10 Portal for Remote access and enjoy *control on the go!*



Interior

- A) Safety Ignition Module (SIM)
- B) Fan
- C) Heat Exchanger
- D) Pressure Sensor
- E) Fuel Mixer
- F) V-10 Controller
- G) Condensate trap
- H) Air Filter Compartment
- I) Combustion Air Intake Duct
- J) Gas Line
- K) Return water
- L) Condensate Drain Outlet
- M) Exhaust
- N) Supply Water



SL SERIES G3

Technical Information

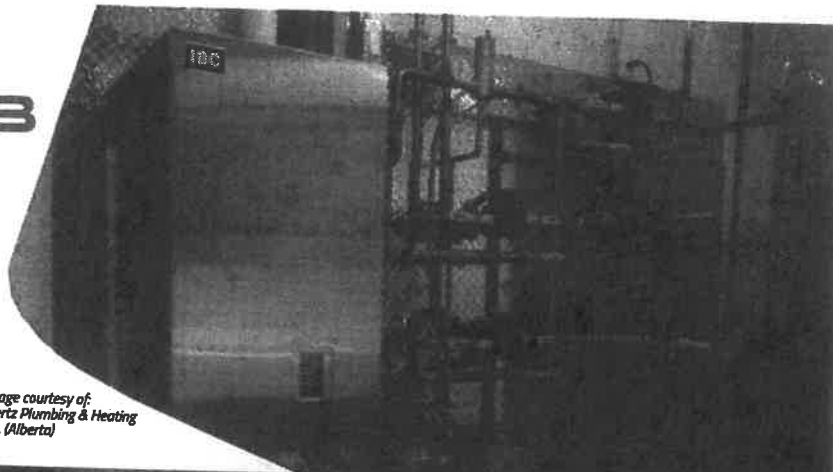


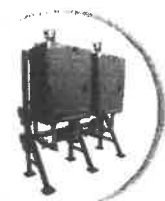
Image courtesy of:
Mertz Plumbing & Heating
Inc. (Alberta)

SPECIFICATIONS	SL 85	SL 115	SL 160	SL 199	SL 260	SL 399
CSA Input (Natural Gas or Propane *) - MBH	10.6 - 85	14 - 115	20 - 160	32 - 199	26 - 260	40 - 399
CSA Input (Natural Gas or Propane *) - KW	3.10 - 24.9	4.10 - 33.7	5.86 - 46.7	9.37 - 58.3	7.6 - 76.2	11.7 - 117
CSA Output - MBH	10.1 - 79	13.3 - 109	19.0 - 147	30 - 181.3	24.9 - 239	38.4 - 383
CSA Output - KW	2.96 - 23.1	3.90 - 32	5.57 - 43.1	8.8 - 3.1	7.31 - 70.0	11.2 - 112
A.F.U.E.	96%	95%	95%	95%	95%	96%
Thermal Efficiency						
Min gas pressure (NG or Propane) - inch w.c.	4	4	4	4	4	4
Max gas pressure (NG or Propane) - inch w.c.	14	14	14	14	14	14
Ambient temperature - Low (*F/*C)	32°F / 0°C	32°F / 0°C	32°F / 0°C	32°F / 0°C	32°F / 0°C	32°F / 0°C
Ambient temperature - High (*F/*C)	122°F / 50°C	122°F / 50°C	122°F / 50°C	122°F / 50°C	122°F / 50°C	122°F / 50°C
Max relative humidity (non-condensing)	90%	90%	90%	90%	90%	90%
Min water temperature	34°F / 1°C	34°F / 1°C	34°F / 1°C	34°F / 1°C	34°F / 1°C	34°F / 1°C
Max water temperature (electronic hi-limit)	190°F / 88°C	190°F / 88°C	190°F / 88°C	190°F / 88°C	190°F / 88°C	190°F / 88°C
Max ΔT - supply / return (electronic fence)	40°F	40°F	40°F	40°F	40°F	40°F
Max water temperature (lockout limit)	201°F / 94°C	201°F / 94°C	201°F / 94°C	201°F / 94°C	201°F / 94°C	201°F / 94°C
Power use (120Vac/60Hz) - Watts @ full fire - Watt (less pumps)	54	72	82	100	127	190
Weight (empty) - lbs/Kg	85 / 39	85 / 39	102 / 46.3	152 / 69	162 / 74	240 / 110
Pressure vessel water content - USG/Liters	2.47 / 9.35	2.47 / 9.35	1.72 / 6.51	5.09 / 19.3	4.64 / 17.6	6.66 / 25.2
Max boiler flow rate - USgpm	14	14	19	25	25	45
Min boiler flow rate - USgpm	2	2	4	6	6	20
Max operating pressure - psig	30	30	30	30	30	80
Min water pressure - psig	8	8	8	8	8	8
Approved installation altitude - ASL	0 - 12,000'	0 - 12,000'	0 - 12,000'	0 - 12,000'	0 - 12,000'	0 - 12,000'
Maximum equivalent vent length, each side (Natural Gas or Propane)	2" 100'	100'	35'	-	-	-
Air intake options: either direct vent or indoor supply	3" 240'	240'	170'	150'	200'	200'

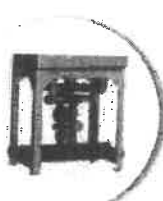
Accessories



Floor Stands



Multiplex Racking



Piping Kit



Condensate Tank



Parts Kit



Vents Kits



We are committed to delivering a *A Greater Degree of Good* across the globe, through our intelligent products, responsible processes and inspired people.

IBC®

IBC Technologies

sales@ibcboiler.com • www.ibcboiler.com

Toll Free: 1-844-HEAT IBC / 1-844-432-8422

All information contained in this brochure is subject to change without notice. Due to clerical error, regulation change or product development please confirm all information with IBC INTERGAS

900-041 (R8)